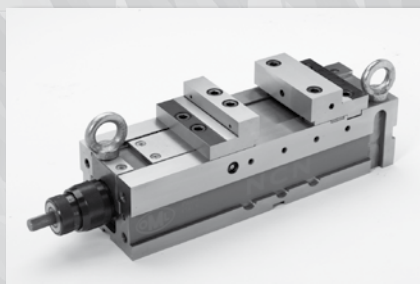


Clamping vise with mechanical/mechanical clamping force multiplier

NCN

9.2



NCN
pag. 9.2. 2

Clamping vise NCN



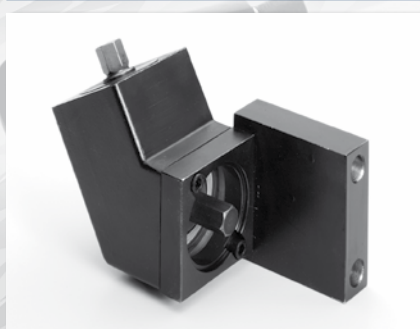
MVS-NCN
pag. 9.2. 8

Modular vertical system



CLAK NCN
pag. 9.2. 14

Modular parallels/quick change

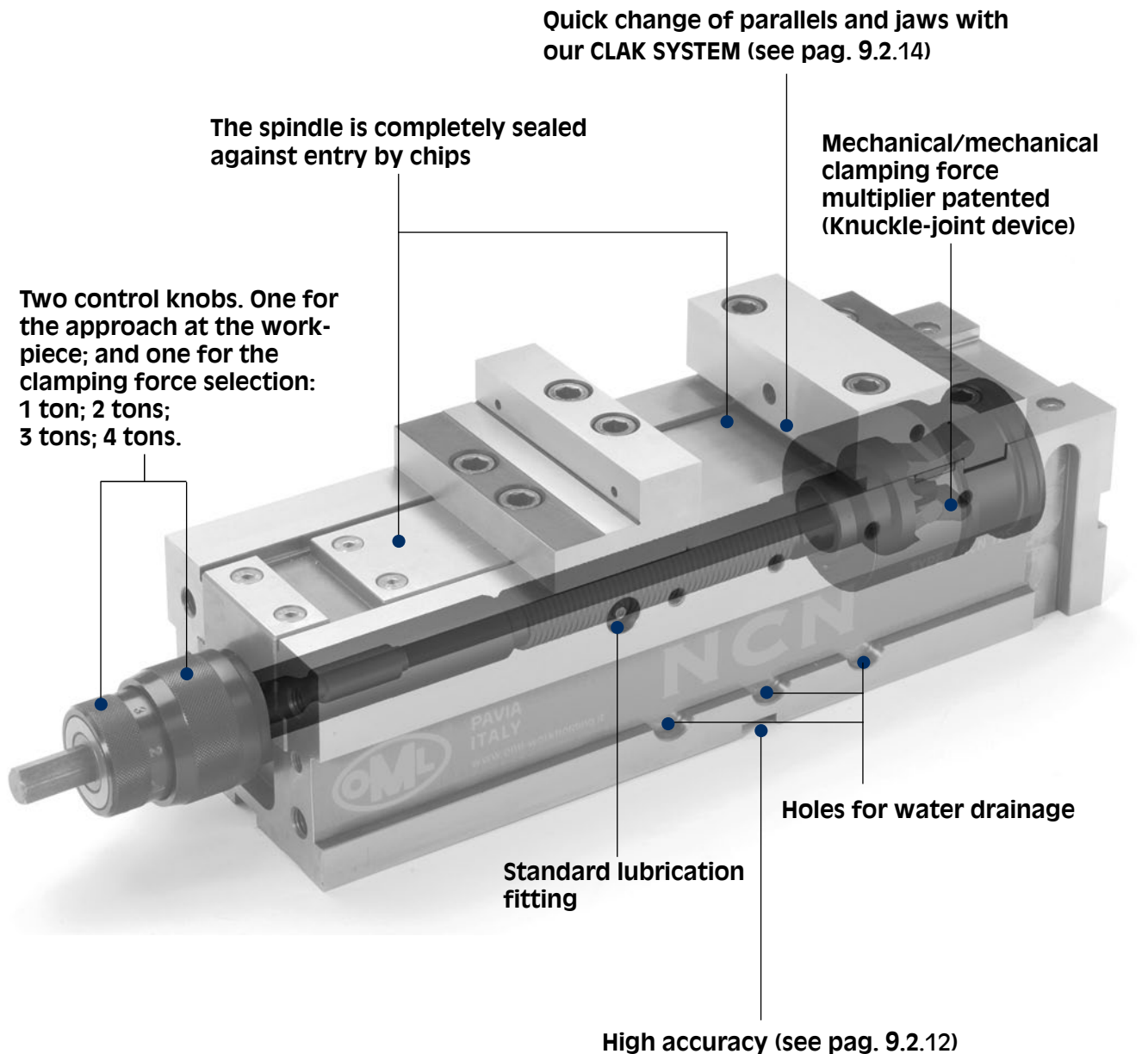


Accessories NCN
pag. 9.2. 15

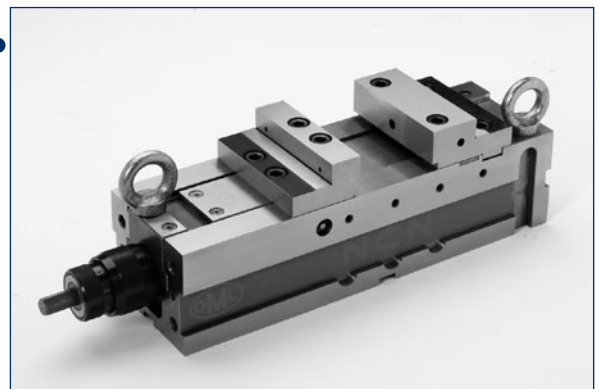


Spare parts NCN
pag. 9.2. 18

NCN-s, designed and manufactured by OML, is the new generation of vises with a mechanical/mechanical clamping force multiplier. This vise features a vibration absorbing body and hardened steel jaws. The most important "Features" are:



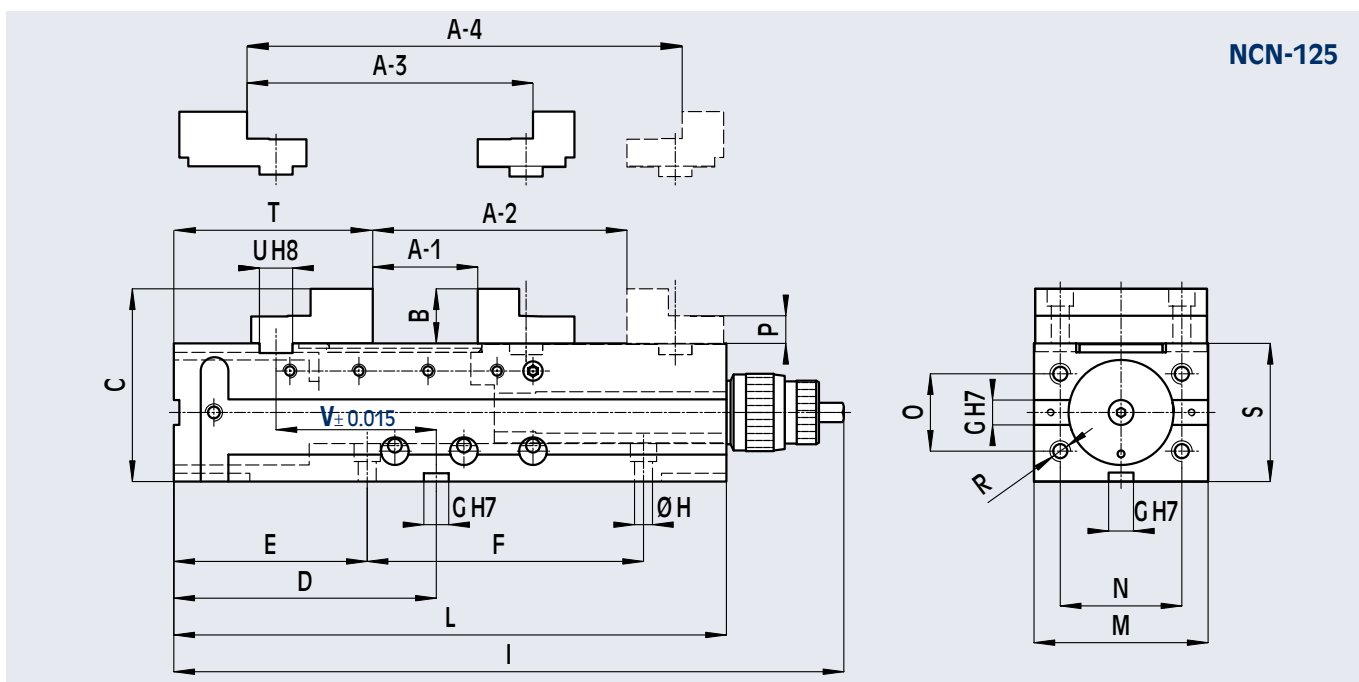
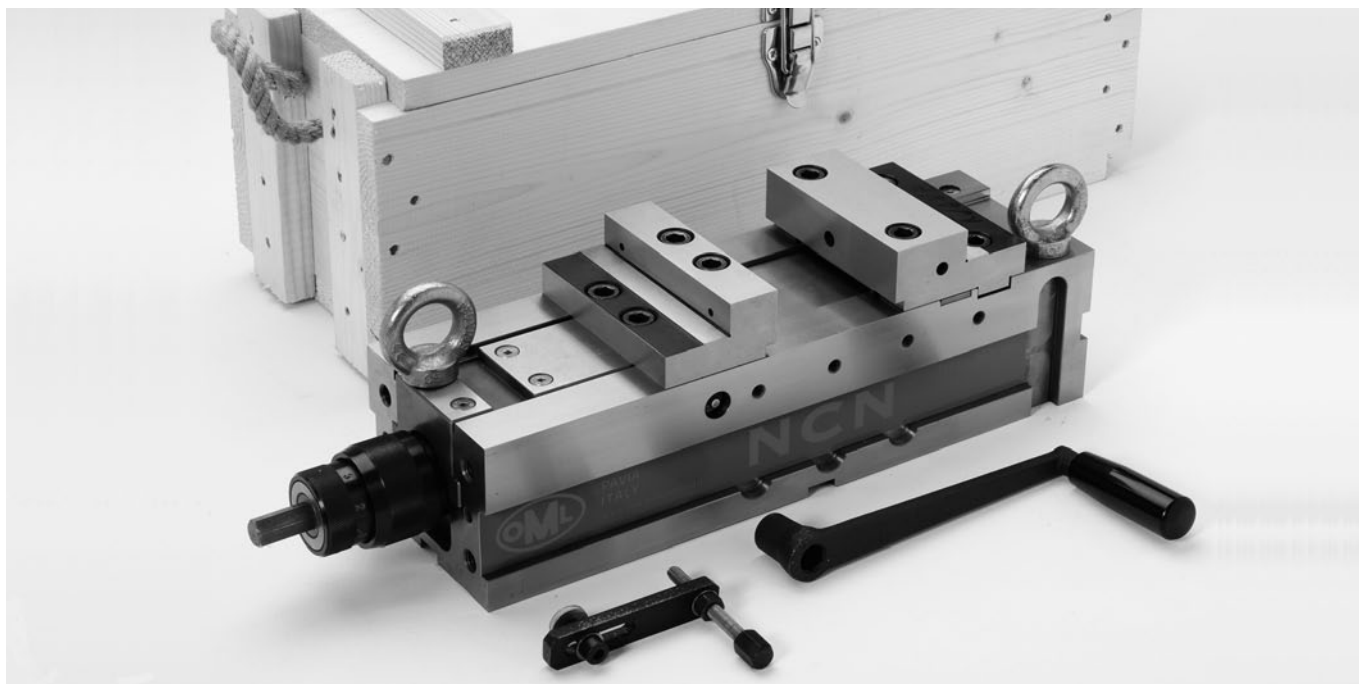
Lifting eye-bolts



On our website: www.omlspa.it,
in the video sections,
are available
important service instructions

clamping vise with mechanical/mechanical clamping force multiplier

Clamping vise NCN-s complete with crank-lever; work-stop; 2 eye-bolts; wooden packing case.

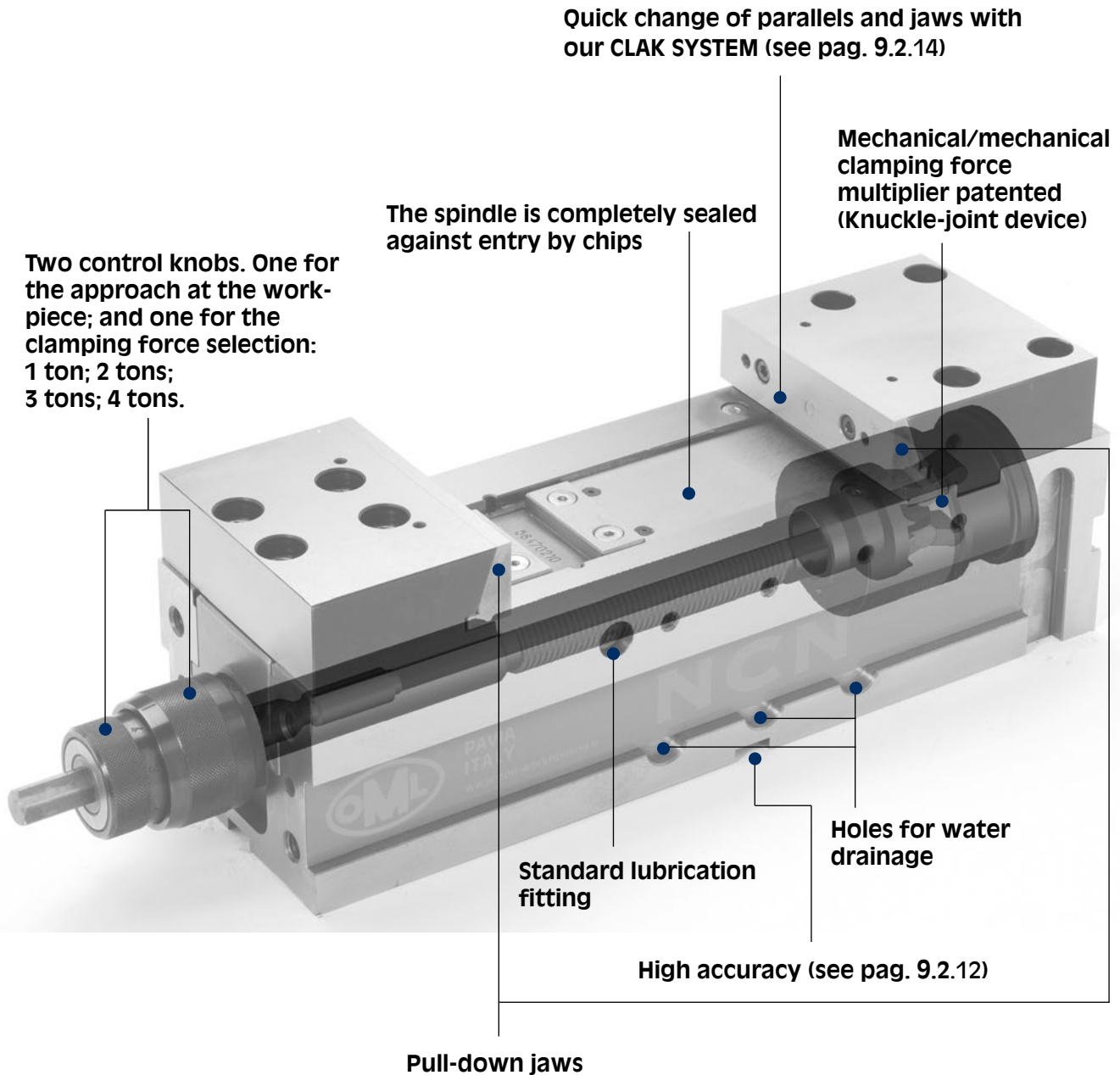


NCN-125

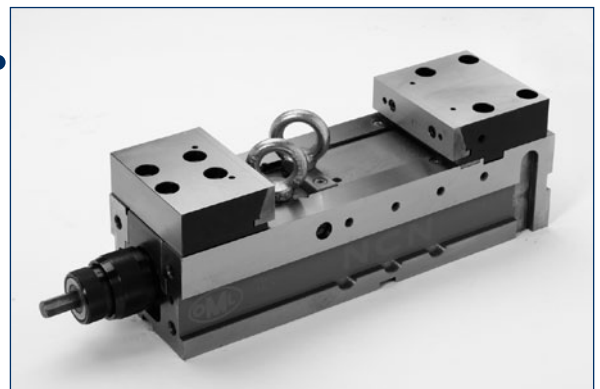
Cod.	type	A-1 mm	A-2 mm	A-3 mm	A-4 mm	B mm	C mm	D mm	E mm	F mm	G mm	H mm	I mm
77 58 47 01	NCN-s 125	0-76	74-184	97-207	205-315	39.5	139.5	190	140	200	18	13	485
		L mm	M mm	N mm	O mm	P mm	R mm	S mm	T mm	U mm	V mm	Weight kg	
		400	126	88	56	20	M12	100	144	24	116	35	

Cod.	type	A-1 mm	A-2 mm	A-3 mm	A-4 mm	B mm	C mm	D mm	E mm	F mm	G mm	H mm	I mm
77 58 48 01	NCN-s 160	see pag. 9.2.20				49.8	164.8	244	144	300	18	13	615
		L mm	M mm	N mm	O mm	P mm	R mm	S mm	T mm	U mm	V mm	Weight kg	
		530	164	128	67	25	M12	115	164	30	159	71	

NCN-d, designed and manufactured by OML, is the new generation of vises with a mechanical/mechanical clamping force multiplier. This vise features a vibration absorbing body and hardened steel jaws. The most important "Features" are:



Lifting eye-bolts



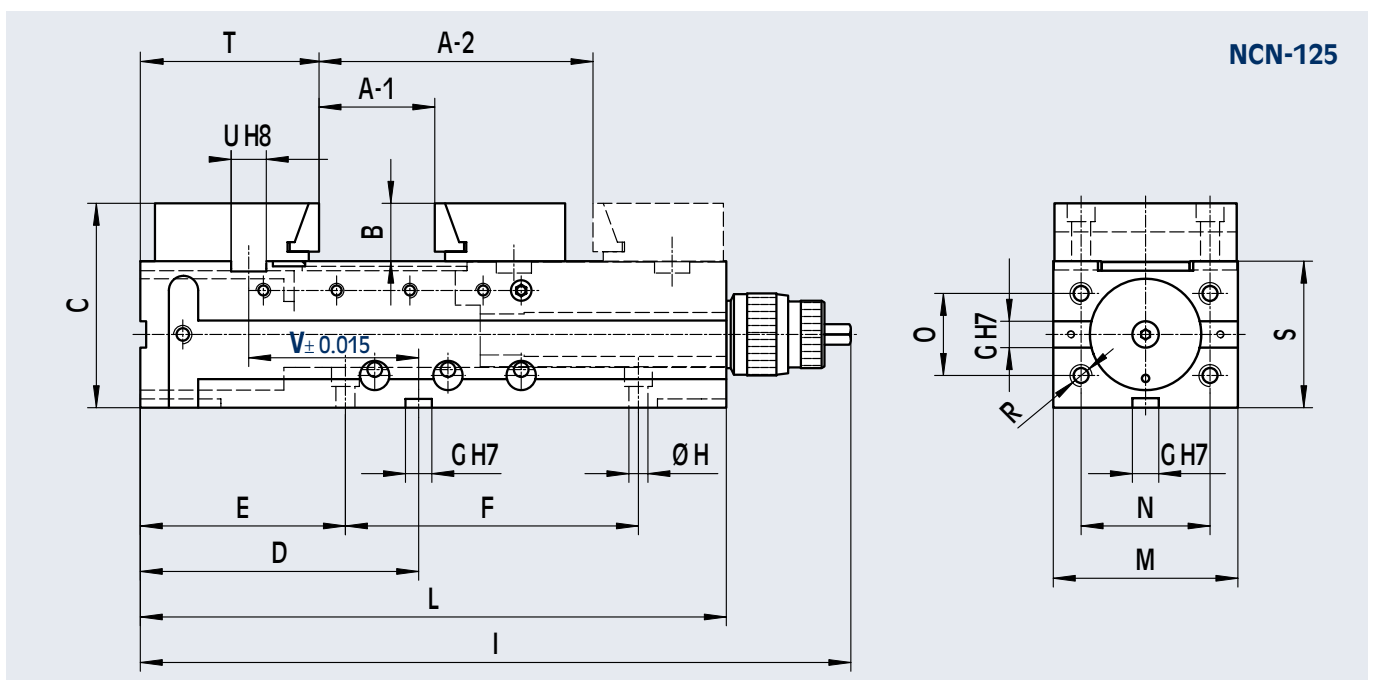
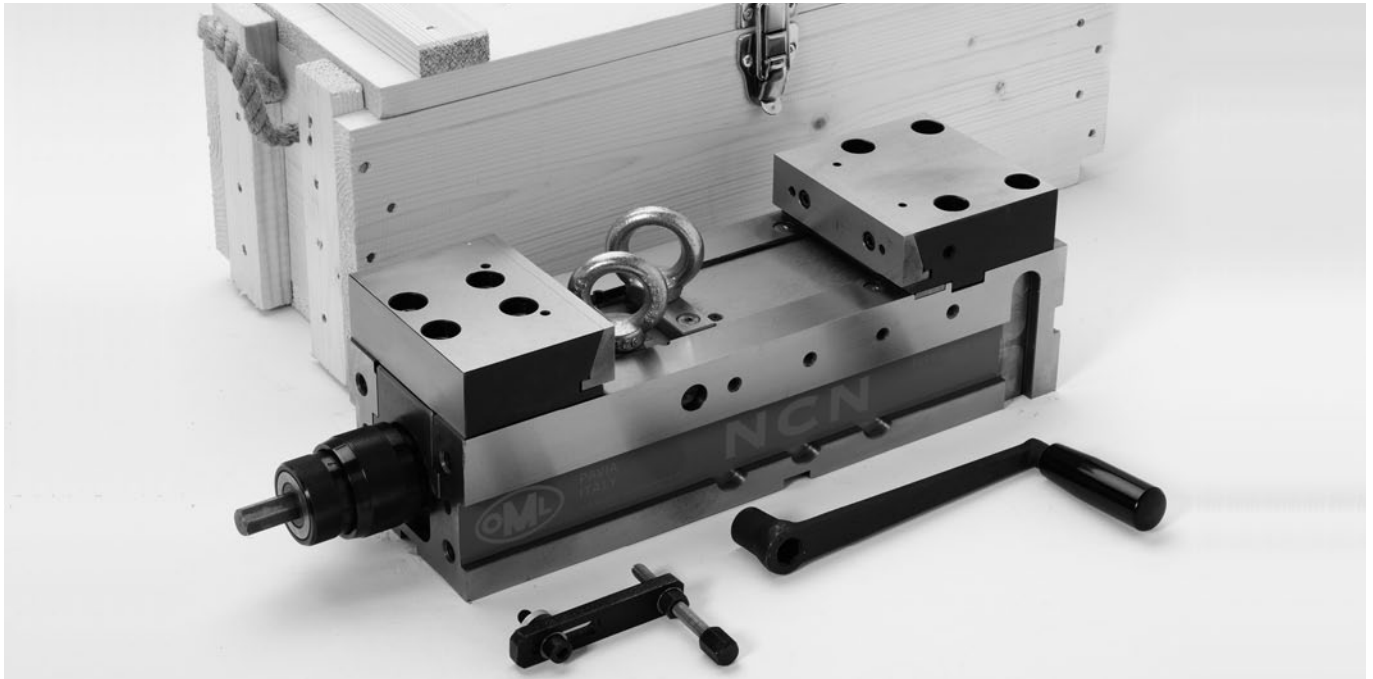
On our website: www.omlspa.it,
in the video sections,
are available
important service instructions

clamping vise with mechanical/mechanical clamping force multiplier and pull-down jaws

NCN-d

9.2

Clamping vise NCN-d complete with crank-lever; work-stop; 2 eye-bolts; wooden packing case.

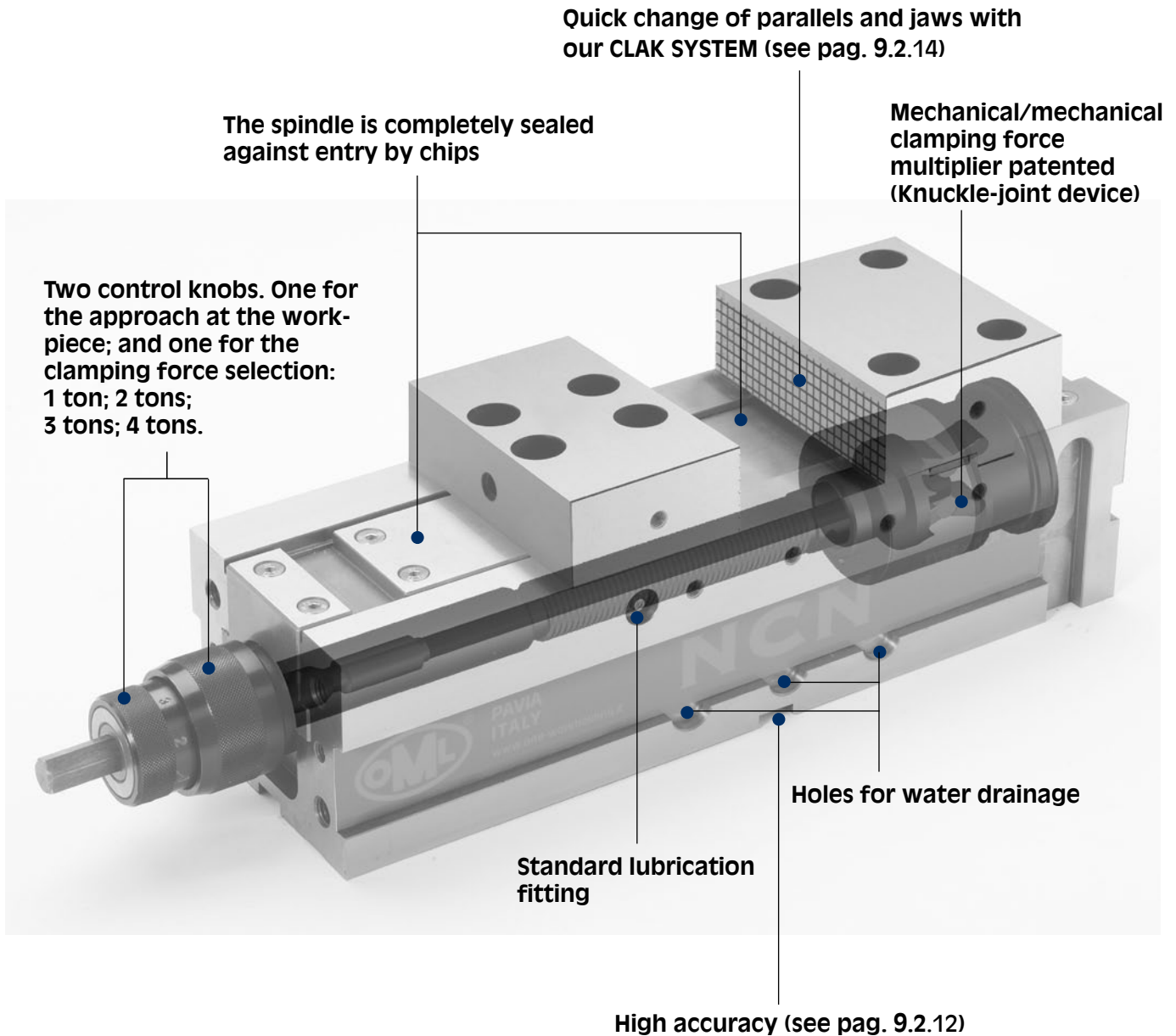


Cod.	type	A-1 mm	A-2 mm	B mm	C mm	D mm	E mm	F mm	G mm	H mm	I mm
77 58 47 02	NCN-d 125	0-69	69-177	39.5	139.5	190	140	200	18	13	485
		L mm	M mm	N mm	O mm	R mm	S mm	T mm	U mm	V mm	Weight kg
		400	126	88	56	M12	100	131.5	24	116	37.5

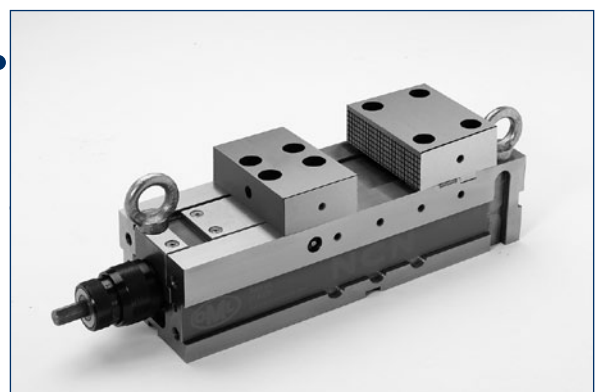
Cod.	type	A-1 mm	A-2 mm	B mm	C mm	D mm	E mm	F mm	G mm	H mm	I mm
77 58 48 02	NCN-d 160	see pag. 9.2.20		49.8	164.8	244	144	300	18	13	615
		L mm	M mm	N mm	O mm	R mm	S mm	T mm	U mm	V mm	Weight kg
		530	164	128	67	M12	115	157	30	159	79

NCN-k clamping vise with mechanical/mechanical clamping force multiplier with square-block jaws

NCN-k, designed and manufactured by OML, is the new generation of vises with a mechanical/mechanical clamping force multiplier. This vise features a vibration absorbing body and hardened steel jaws. The most important "Features" are:



Lifting eye-bolts



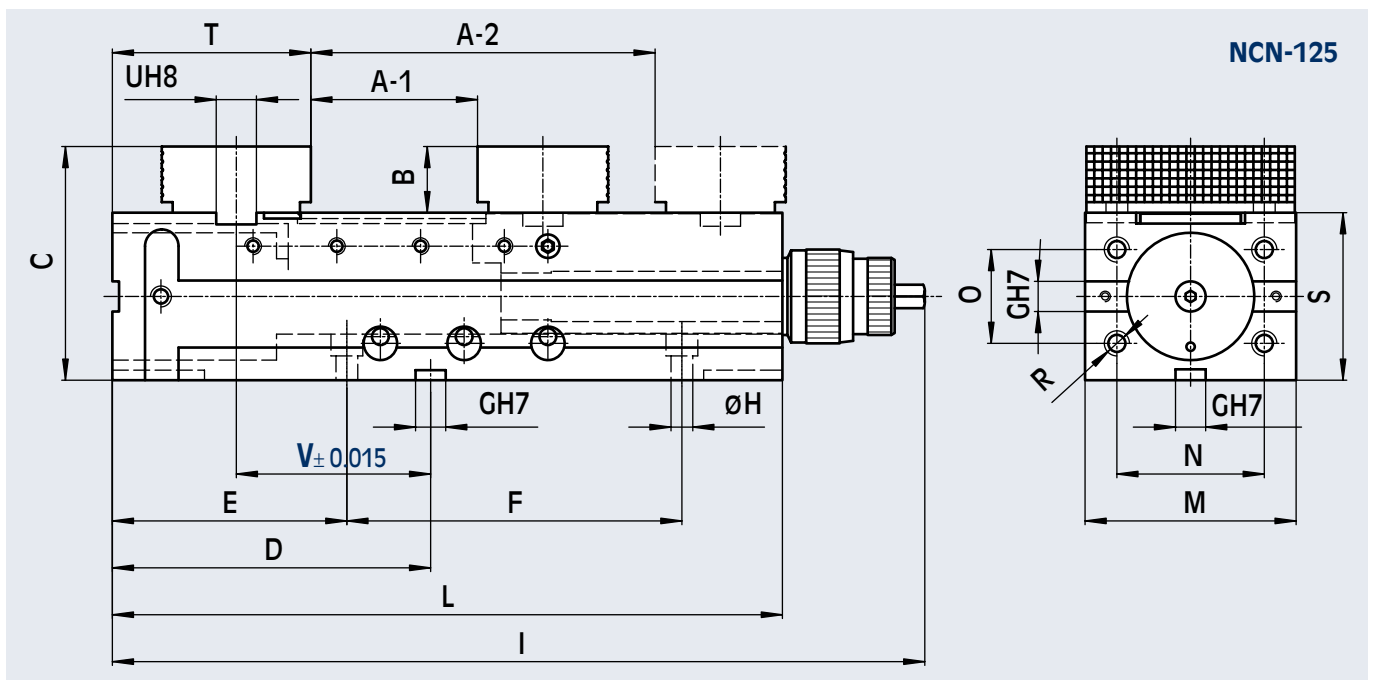
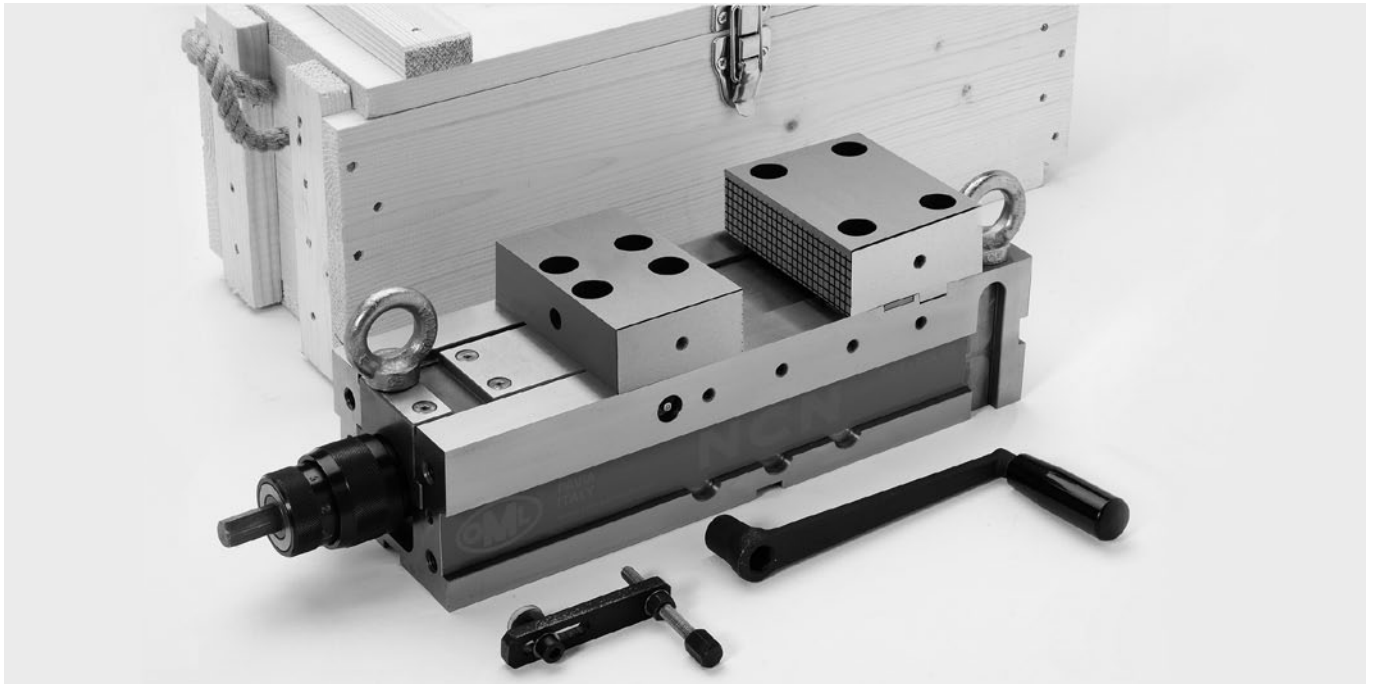
On our website: www.omlspa.it,
in the video sections,
are available
important service instructions

clamping vise with mechanical/mechanical clamping force multiplier with square-block jaws

NCN-k

9.2

Clamping vise NCN-k complete with crank-lever; work-stop; 2 eye-bolts; wooden packing case.

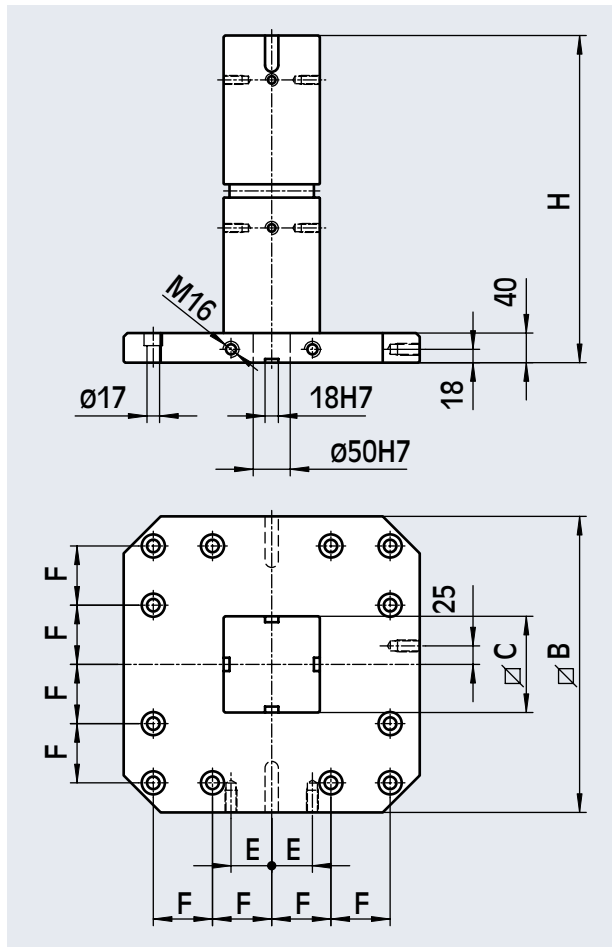


Cod.	type	A-1 mm	A-2 mm	B mm	C mm	D mm	E mm	F mm	G mm	H mm	I mm
77 58 47 03	NCN-k 125	0-97	95-201	39.5	139.5	190	140	200	18	13	485
		L mm	M mm	N mm	O mm	R mm	S mm	T mm	U mm	V mm	Weight kg
		400	126	88	56	M12	100	118	24	116	37

Cod.	type	A-1 mm	A-2 mm	B mm	C mm	D mm	E mm	F mm	G mm	H mm	I mm
77 58 48 03	NCN-k 160	see pag. 9.2.20		49.8	164.8	244	144	300	18	13	615
		L mm	M mm	N mm	O mm	R mm	S mm	T mm	U mm	V mm	Weight kg
		530	164	128	67	M12	115	135	30	159	75

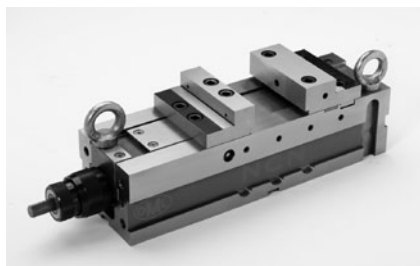
MVS-NCN

modular vertical system for 4 vises

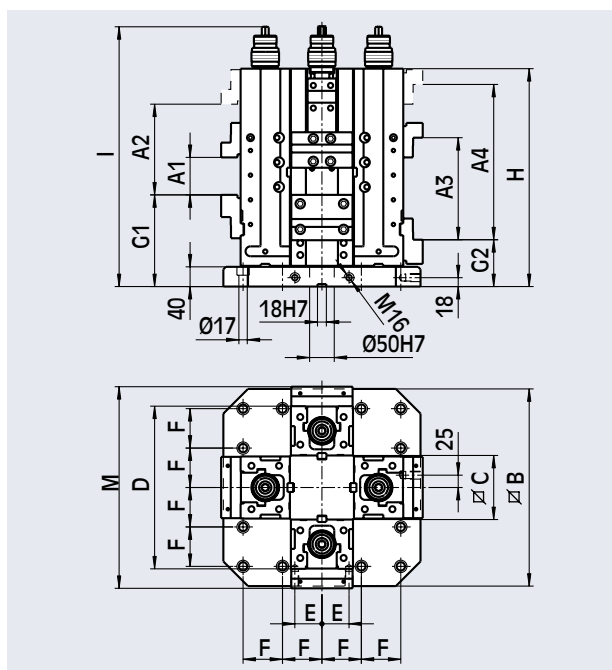


Cod.	for type	B mm	C mm	E mm	F mm	H mm	Weight kg
77 58 47 21	NCN 125	400	130	55	80	442	100
77 58 47 22		500		75	100		127
77 58 48 21	NCN 160	400	170	55	80	572	167
77 58 48 22		500		75	100		194

Configuration and overall dimensions for NCN-s

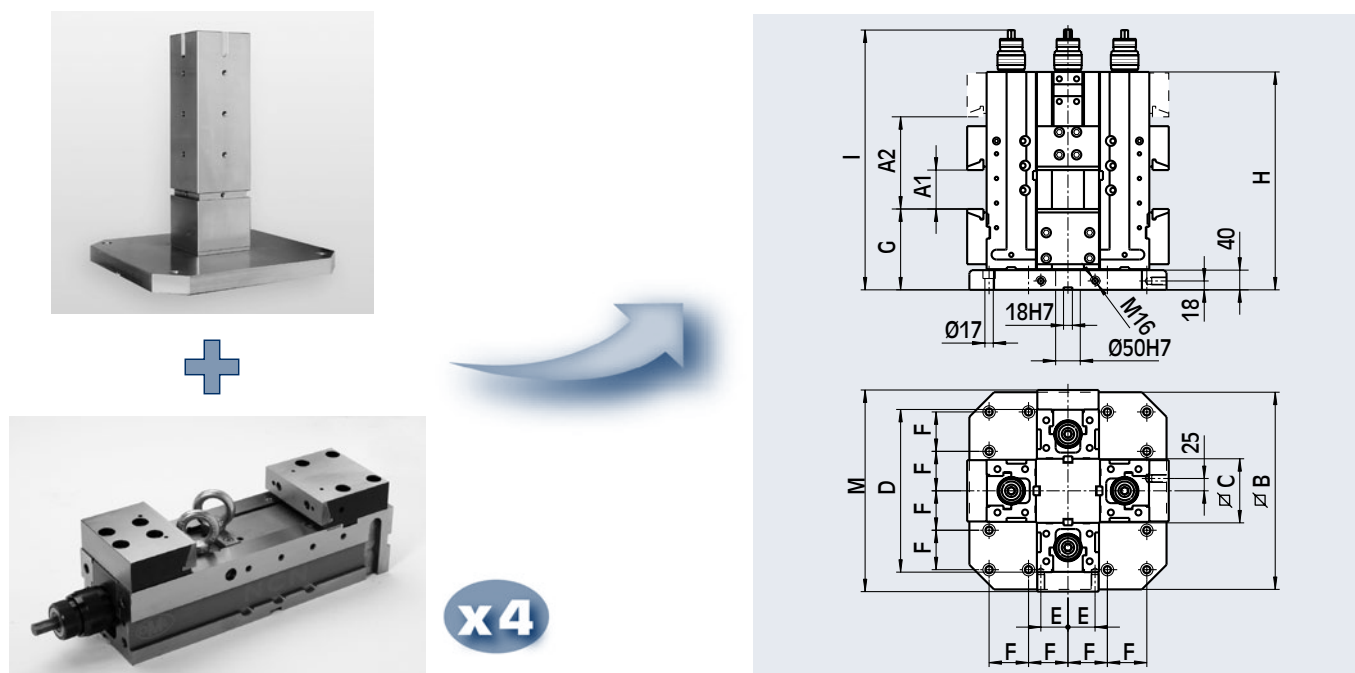


x4



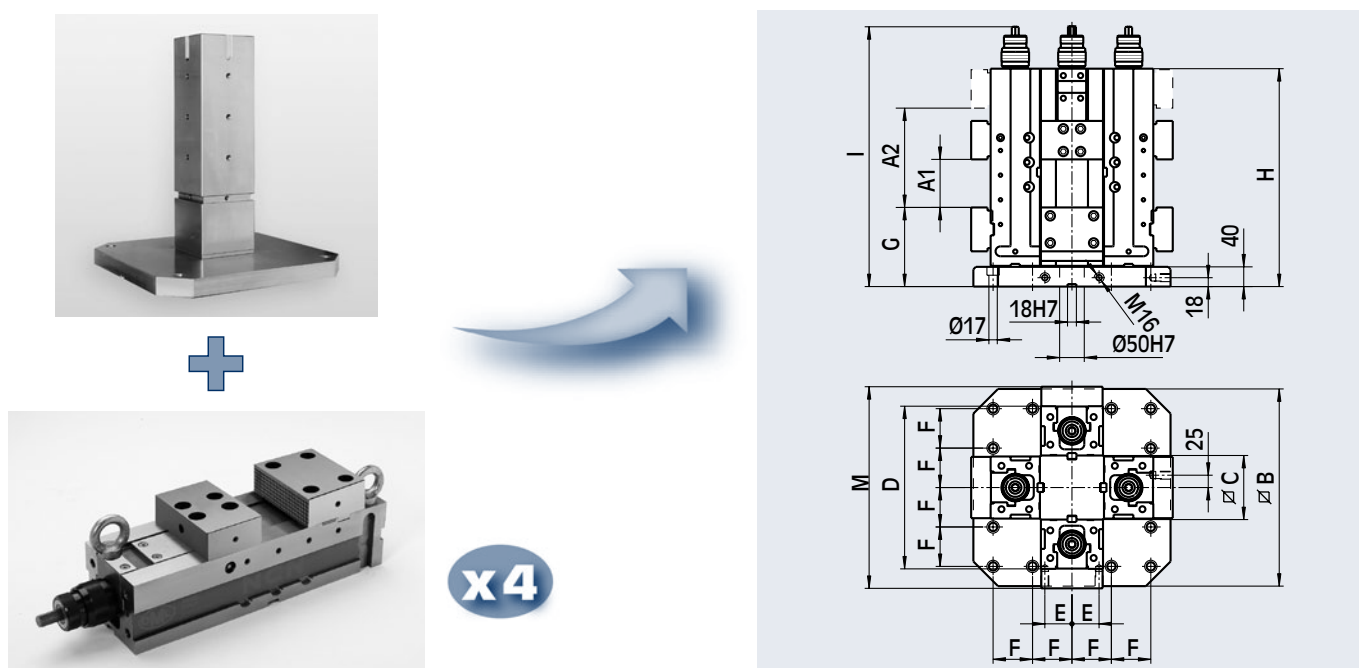
for type	A-1 mm	A-2 mm	A-3 mm	A-4 mm	B mm	C mm	D mm	E mm	F mm	G-1 mm	G-2 mm	H mm	I mm	M mm	Weight kg
NCN-s 125	0-76	74-184	97-207	205-315	400	130	330	55	80	186	95	442	527	409	240
					500			75	100						267
NCN-s 160	see pag. 9.2.20				400	170	400	55	80	206	98	572	657	499.6	451
					500			75	100						468

Configuration and overall dimensions for NCN-d

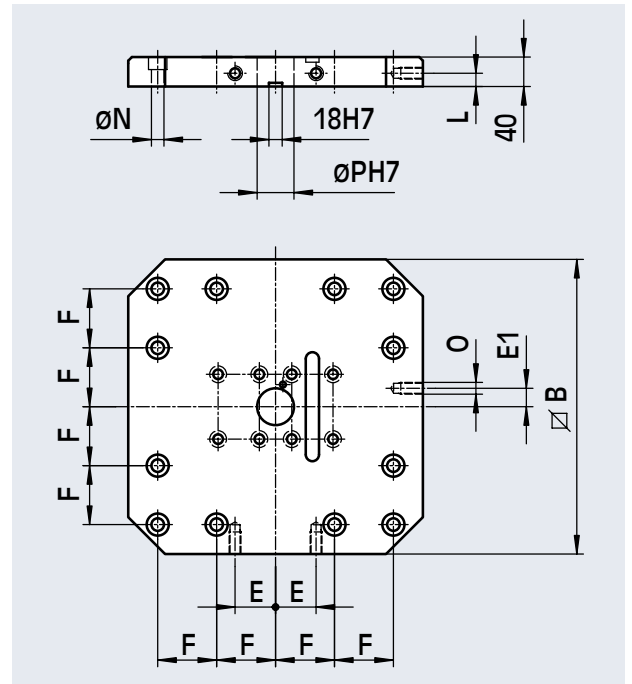


for type	A-1 mm	A-2 mm	B mm	C mm	D mm	E mm	F mm	G mm	H mm	I mm	M mm	Weight kg
NCN-d 125	0-69	69-177	400	130	330	55	80	173.5	442	527	409	250
			500			75	100					277
NCN-d 160	see pag. 9.2.20		400	170	400	55	80	199	572	657	499.6	483
			500			75	100					510

Configuration and overall dimensions for NCN-k

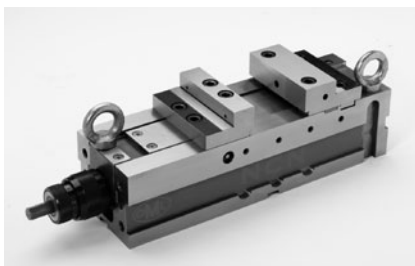
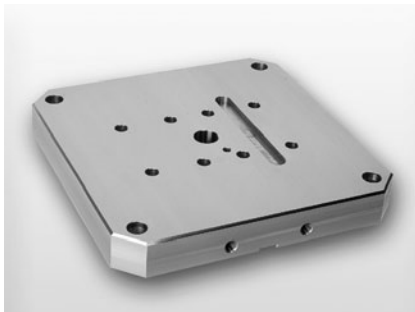


for type	A-1 mm	A-2 mm	B mm	C mm	D mm	E mm	F mm	G mm	H mm	I mm	M mm	Weight kg
NCN-k 125	0-97	95-201	400	130	330	55	80	160	442	527	409	248
			500			75	100					275
NCN-k 160	see pag. 9.2.20		400	170	400	55	80	177	572	657	499.6	467
			500			75	100					484

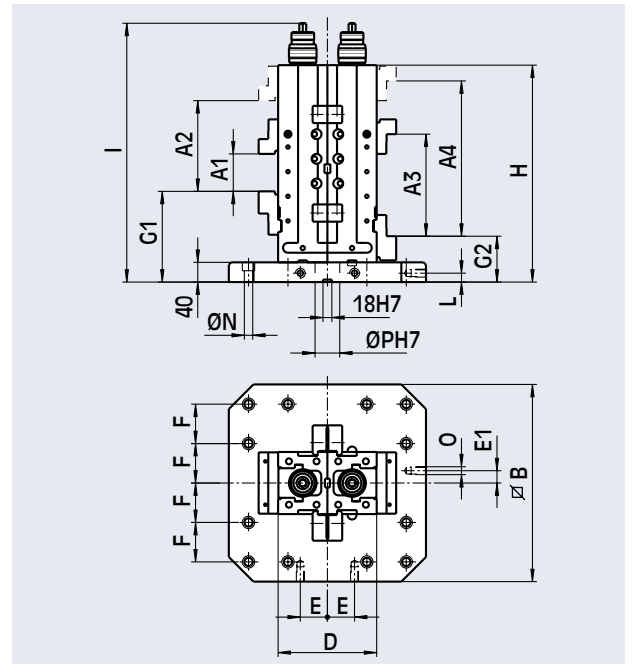


Cod.	for type	B mm	E mm	E1 mm	F mm	L mm	N mm	O mm	P mm	Weight kg
58 47 70 10	NCN 125	300	40	0	125	15	13	M 12	25	28
58 47 70 20		400	55	25	80	18	17	M 16	50	47
58 47 70 30		500	75	25	100	18	17	M 16	50	64
58 48 70 10	NCN 160	300	40	0	125	15	13	M 12	25	28
58 48 70 20		400	55	25	80	18	17	M 16	50	47
58 48 70 30		500	75	25	100	18	17	M 16	50	64

Configuration and overall dimensions for NCN-s

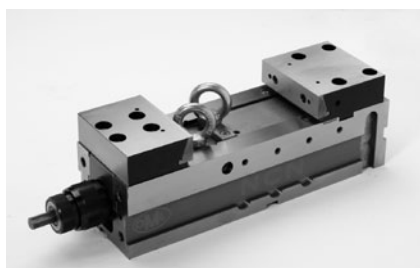
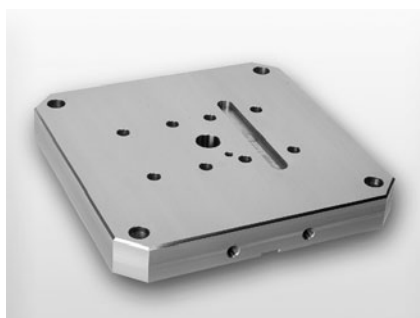


x2

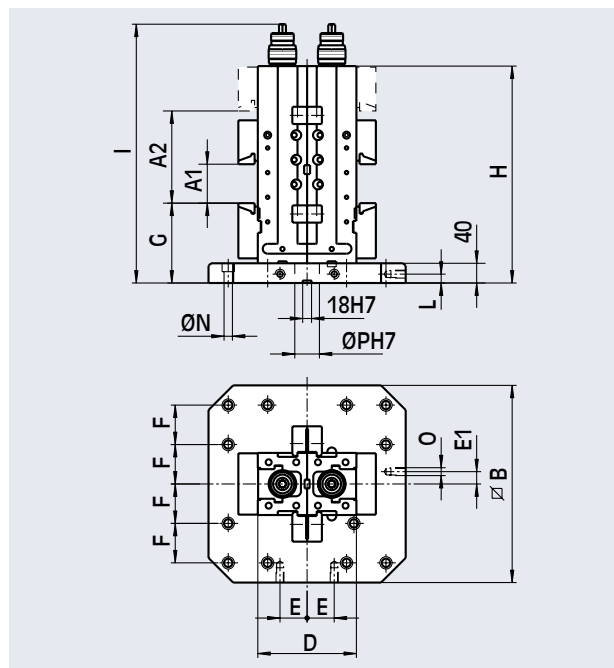


for type	A-1 mm	A-2 mm	A-3 mm	A-4 mm	B mm	D mm	E mm	E-1 mm	F mm	G-1 mm	G-2 mm	H mm	I mm	L mm	N mm	O mm	P mm	Weight kg
NCN-s 125	0-76	74-184	97-207	205-315	300	200	40	0	125	184	93	440	525	15	13	M 12	25	100
					400		55	25	80					18	17	M 16	50	119
					500		75	25	100					18	17	M 16	50	136
NCN-s 160	see pag. 9.2.20				300	230	40	0	125	204	96	570	655	15	13	M 12	25	172
					400		55	25	80					18	17	M 16	50	191
					500		75	25	100					18	17	M 16	50	208

Configuration and overall dimensions for NCN-d

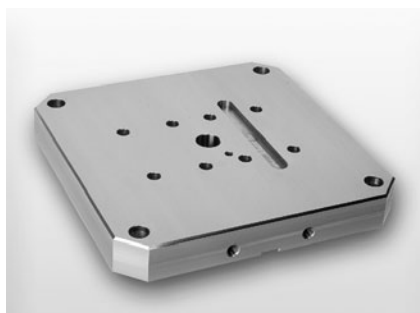


x2

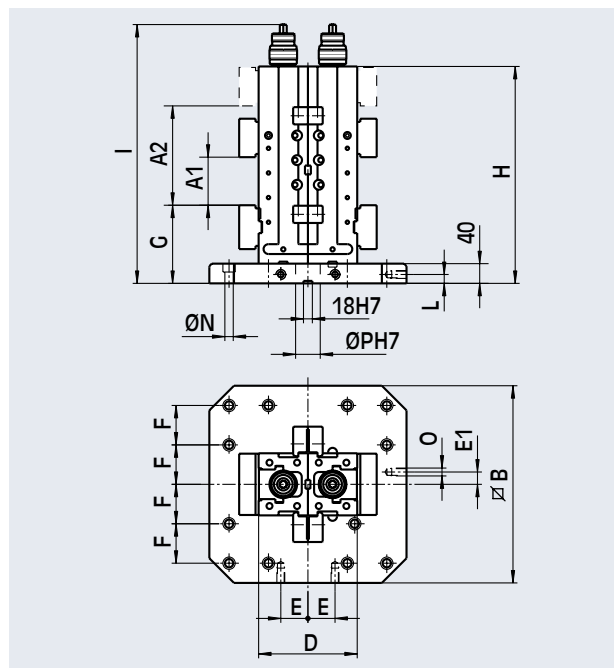


for type	A-1 mm	A-2 mm	B mm	D mm	E mm	E-1 mm	F mm	G mm	H mm	I mm	L mm	N mm	O mm	P mm	Weight kg
NCN-d 125	0-69	69-177	300	200	40	0	125	173.5	440	525	15	13	M 12	25	105
			400		55	25	80				18	17	M 16	50	124
			500		75	25	100				18	17	M 16	50	141
NCN-d 160	see pag. 9.2.20		300	230	40	0	125	197	570	655	15	13	M 12	25	188
			400		55	25	80				18	17	M 16	50	207
			500		75	25	100				18	17	M 16	50	224

Configuration and overall dimensions for NCN-k

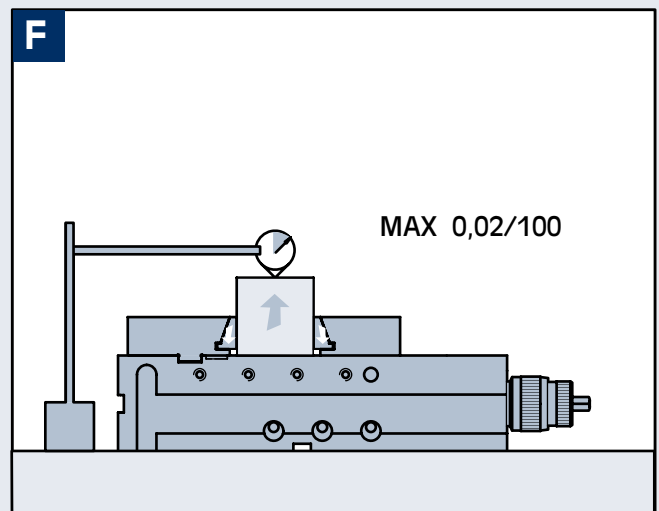
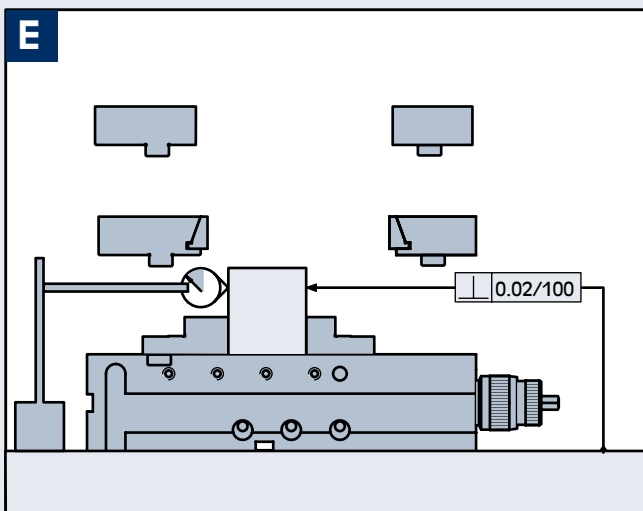
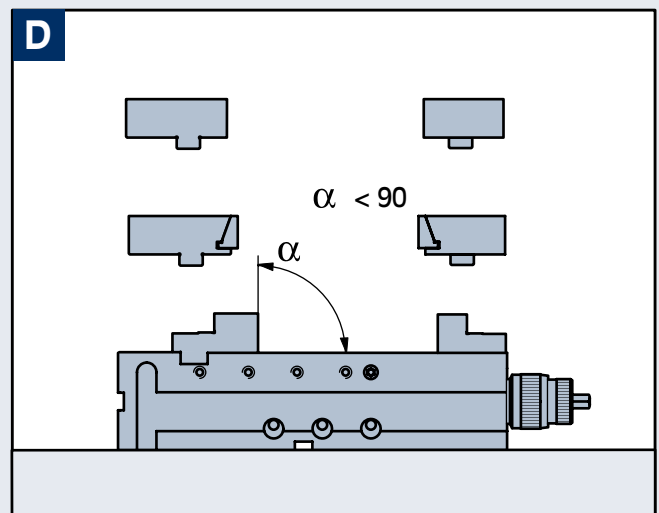
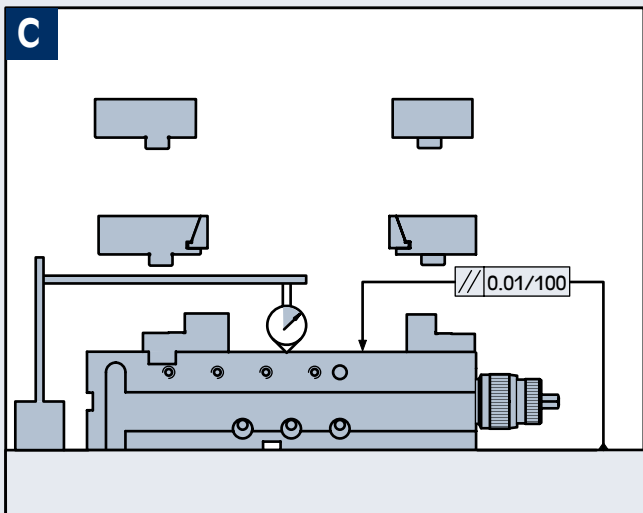
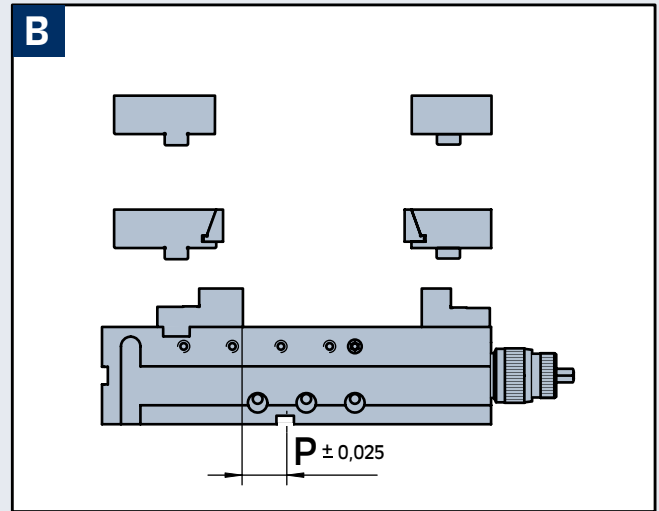
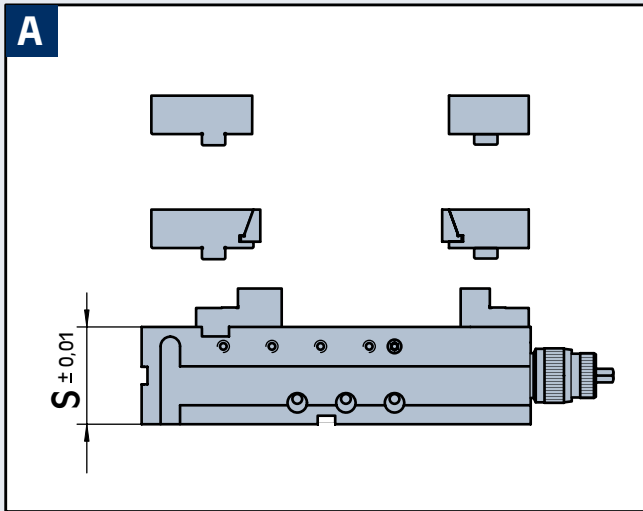


x2



for type	A-1 mm	A-2 mm	B mm	D mm	E mm	E-1 mm	F mm	G mm	H mm	I mm	L mm	N mm	O mm	P mm	Weight kg
NCN-k 125	0-97	95-201	300	200	40	0	125	160	440	525	15	13	M 12	25	104
			400		55	25	80				18	17	M 16	50	123
			500		75	25	100				18	17	M 16	50	140
NCN-k 160	see pag. 9.2.20		300	230	40	0	125	175	570	655	15	13	M 12	25	180
			400		55	25	80				18	17	M 16	50	199
			500		75	25	100				18	17	M 16	50	216

Manufacturing tolerances



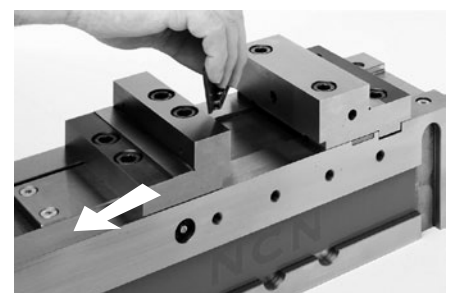
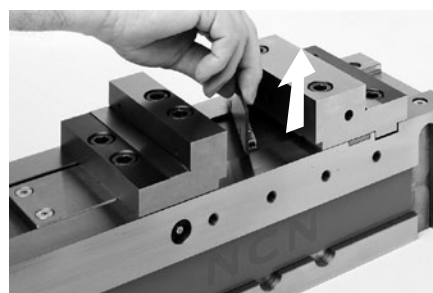
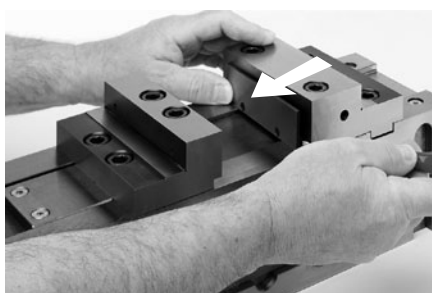
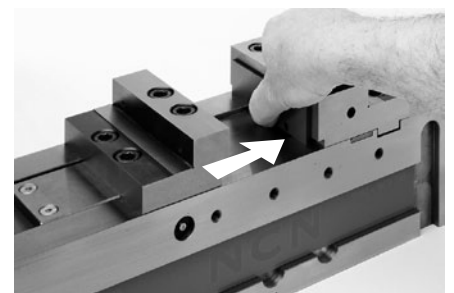
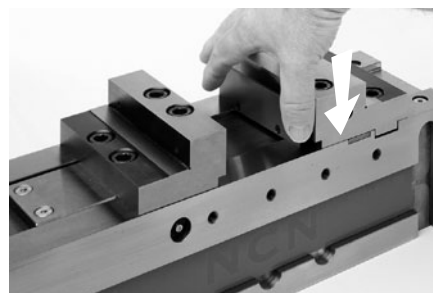
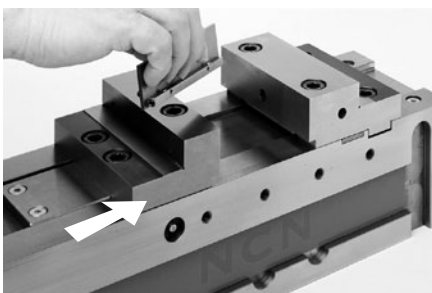
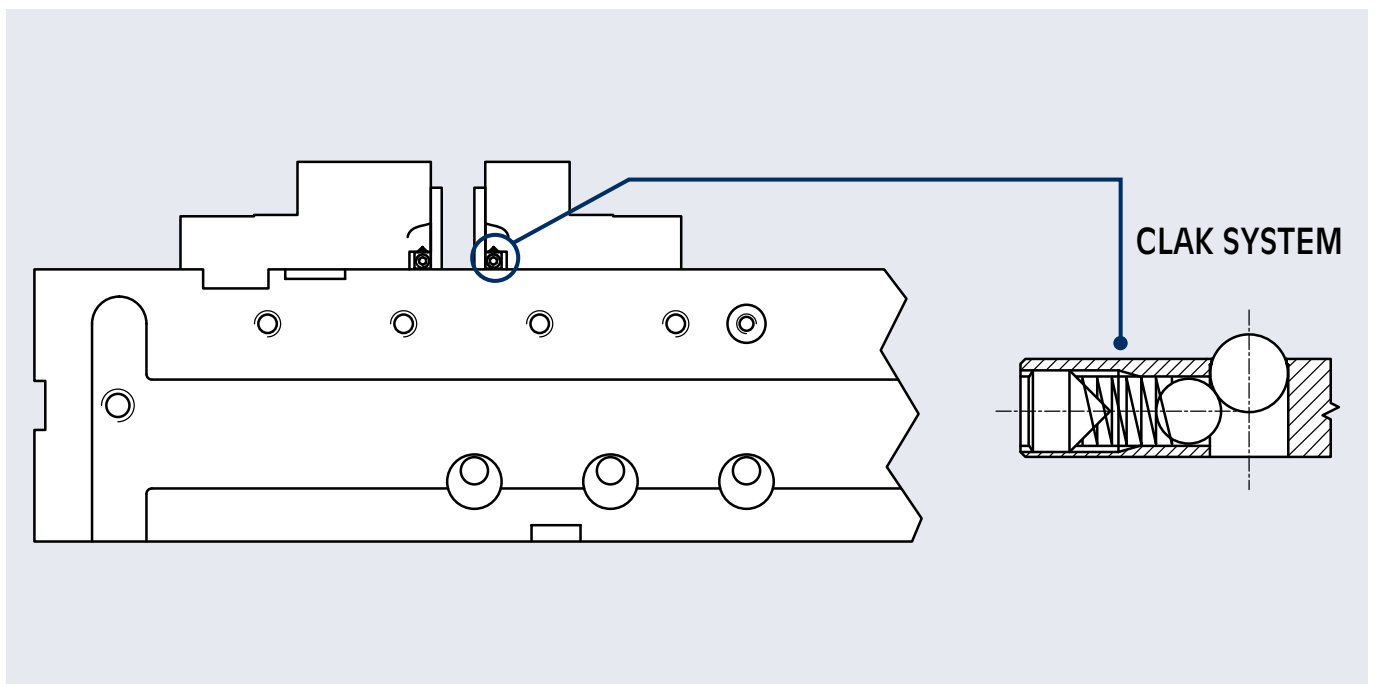
This new patented system allows the quick change of parallels, angular parallels, V-jaws, soft jaws for any type of workpieces.

Benefits:

- Reduce downtime and set-up time
- Elimination of clamps and locks thanks to the patented self locking system
- Increase the accuracy of finished parts and reduce scrap

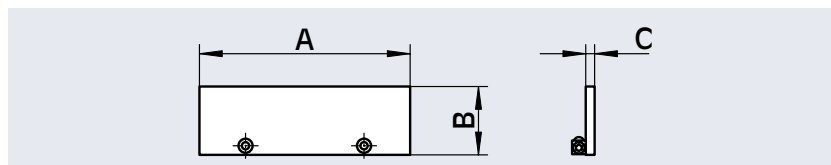
All components are case hardened and precision ground.

The CLAK can be used for the complete NCN range: NCN-s/d/k.



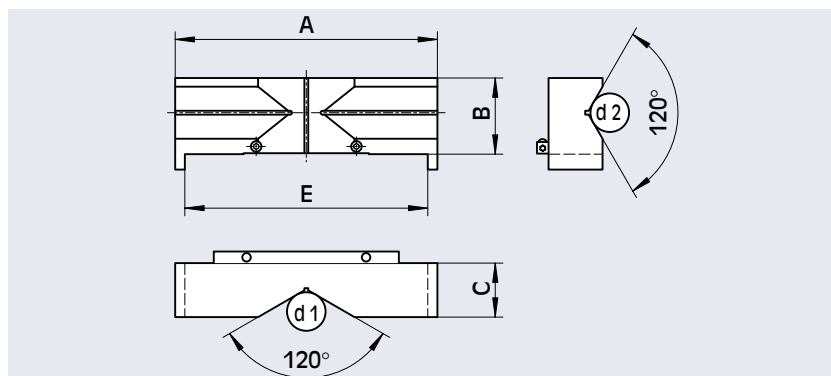


Set of 6 pairs of parallels



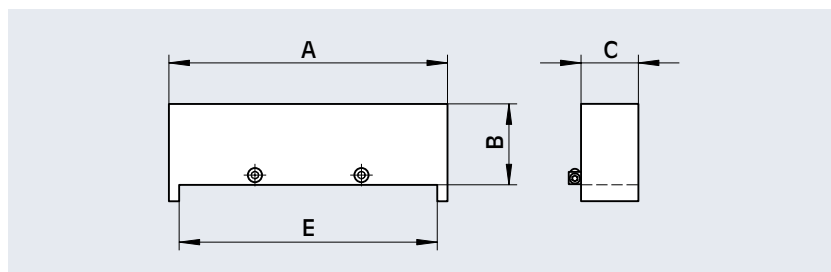
Cod.	for type	A mm	B mm	C mm
58 47 92 06	NCN-s/d/k 125	124	15-20-25-30-33-36	4
58 48 92 06	NCN-s/d/k 160	160	15-25-35-40-43-46	4

V jaw



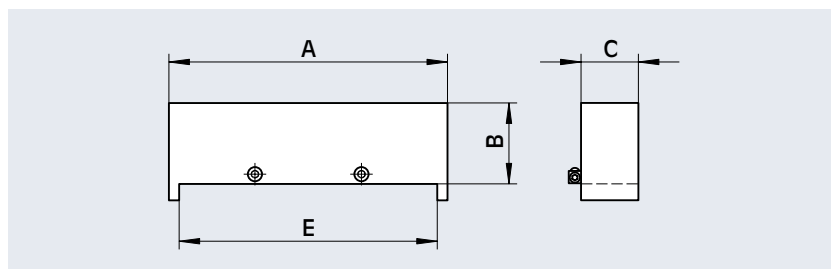
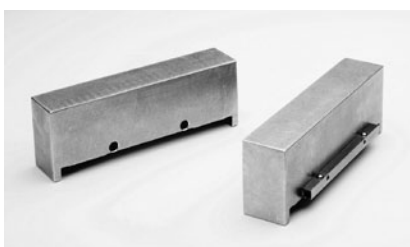
Cod.	for type	A mm	B mm	C mm	E mm	d 1 mm	d 2 mm
58 47 94 09	NCN-s/d/k 125	136	39.5	28	126	15-90	10-40
58 48 94 09	NCN-s/d/k 160	174	49.8	33	164	20-110	15-50

Pair of aluminum jaws



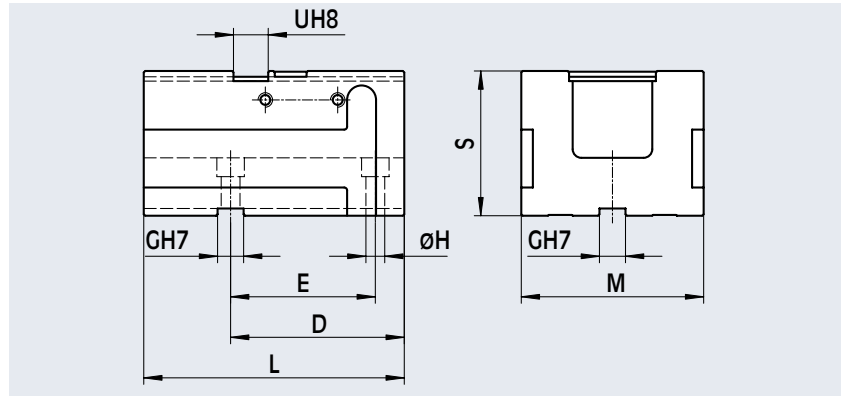
Cod.	for type	A mm	B mm	C mm	E mm
58 47 95 09	NCN-s/d/k 125	136	39.5	28	126
58 48 95 09	NCN-s/d/k 160	174	49.8	33	164

Pair of soft steel jaws



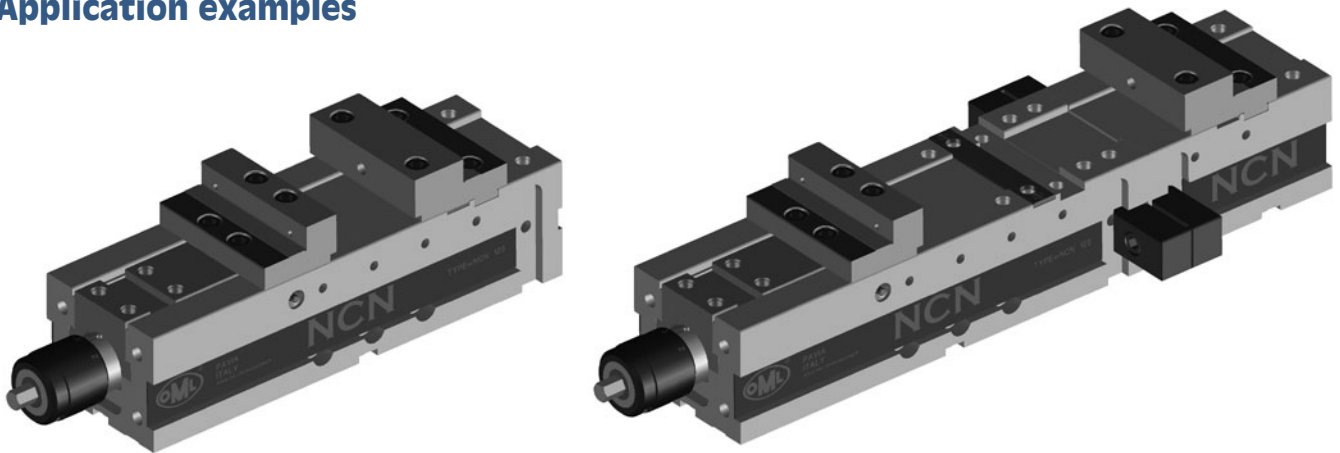
Cod.	for type	A mm	B mm	C mm	E mm
58 47 96 09	NCN-s/d/k 125	136	39.5	28	126
58 48 96 09	NCN-s/d/k 160	174	49.8	33	164

Extension element



Cod.	for type	D mm	E mm	G mm	H mm	L mm	M mm	S mm	U mm	Weight kg
58 47 71 19	NCN-s/d/k 125	120	100	18	13	180	126	100	24	12
58 48 71 19	NCN-s/d/k 160	170	100	18	13	240	164	115	30	23

Application examples



Angle drive NCN

Cod.	for type
58 47 86 10	NCN-s/d/k 125
58 48 86 10	NCN-s/d/k 160



Rotary key

Cod.	for type
58 47 85 10	NCN-s/d/k 125/160

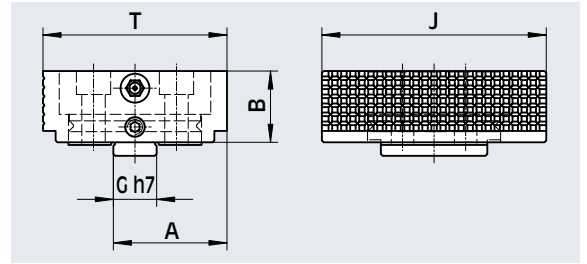
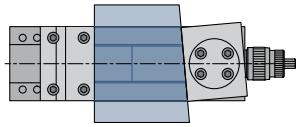


Crank-lever

Cod.	for type
58 47 84 10	NCN-s/d/k 125/160



Floating jaw



Cod.	for type	A mm	B mm	G mm	J mm	T mm
58 47 74 10	NCN-s/d/k 125	63	39.5	24	124.4	102
58 48 74 10	NCN-s/d/k 160	85	49.8	30	160.4	140



Pair of smooth jaws

Cod.	for type
58 47 45 09	NCN-d 125
58 48 45 09	NCN-d 160

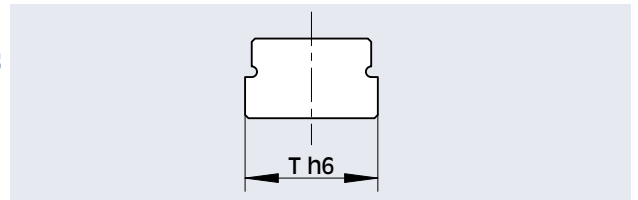


Pair of grooved jaws

Cod.	for type
58 47 44 09	NCN-d 125
58 48 44 09	NCN-d 160



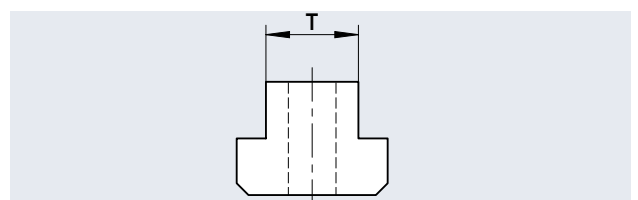
Pair of positioning keys



Code for keys						for type
mm 12 - h 6	mm 14 - h 6	mm 16 - h 6	mm 18 - h 6	mm 20 - h 6	mm 22 - h 6	NCN-s/d/k 125/160
58 02 13 92	58 02 13 93	58 02 13 94	58 02 13 95	58 02 13 96	58 02 13 97	



Pair of clamps

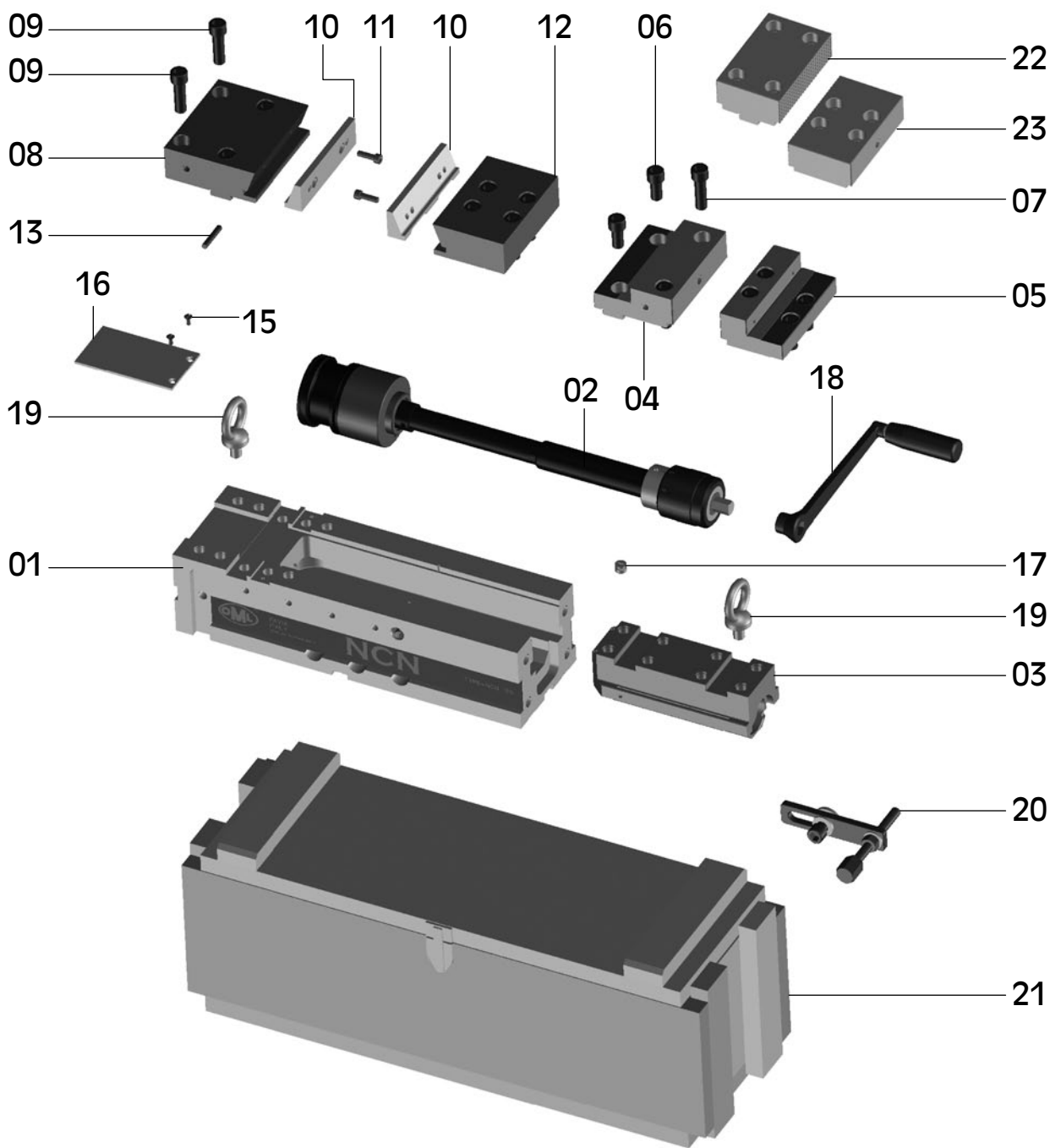


Code for T-slot						for type
mm 12	mm 14	mm 16	mm 18	mm 20	mm 22	NCN-s/d/k 125/160
58 02 27 92	58 02 27 93	58 02 27 94	58 02 27 95	58 02 27 96	58 02 27 97	



Set of clamps for DUO-NCN

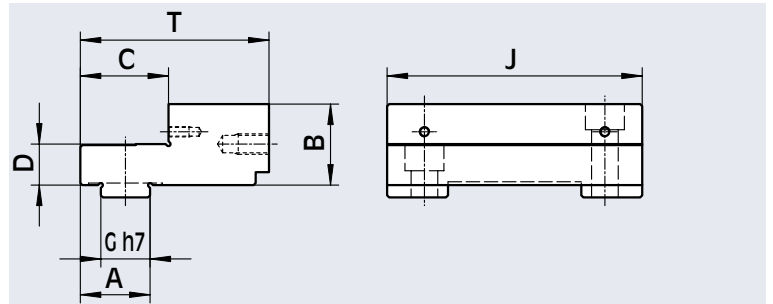
Cod.	for type
58 47 69 10	NCN-s/d/k 125/160



Description

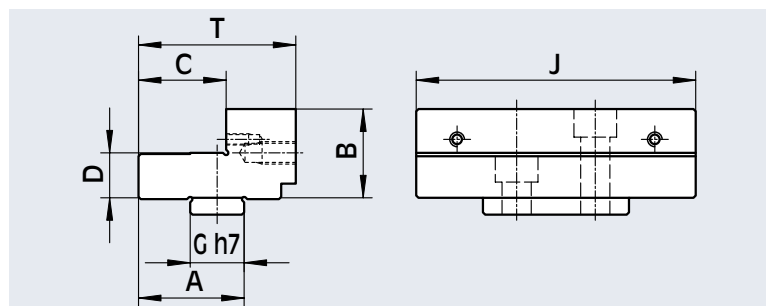
01.....	Body	12.....	Moveable support NCN-d
02.....	Clamping force multiplier group	13.....	Bushing rubber NCN-d
03.....	Slide-way	15.....	Screw TSEI M4x10
04.....	Fixed jaw "L" type NCN-s	16.....	Moveable plate
05.....	Moveable jaw "L" type NCN-s	17.....	Protection screws
06.....	Screw TCEI M12x45	18.....	Crank lever
07.....	Screw TCEI M12x45	19.....	Eye bolt
08.....	Fixed support NCN-d	20.....	Work stop
09.....	Screws for fixed jaws	21.....	Wooden packing case
10.....	Jaws for NCN-d	22.....	Fixed square block jaw NCN-k
11.....	Screws for jaws TCEI M6x25	23.....	Moveable square block jaw NCN-k

Fixed jaw "L" type for NCN-s



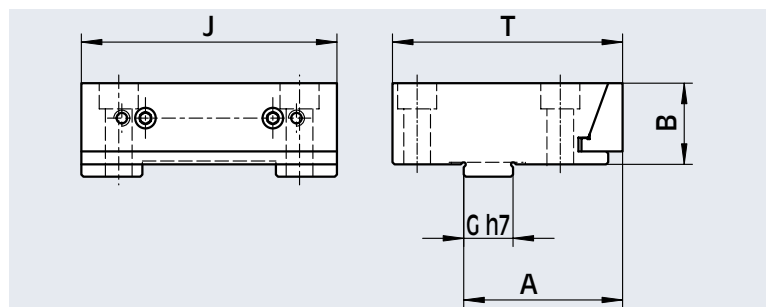
Cod.	for type	A mm	B mm	C mm	D mm	G mm	J mm	T mm
58 47 40 19	NCN-s 125	34	39.5	43	20	24	124.4	92
58 48 40 19	NCN-s 160	40	49.8	54	25	30	160.4	104

Moveable jaw "L" type for NCN-s



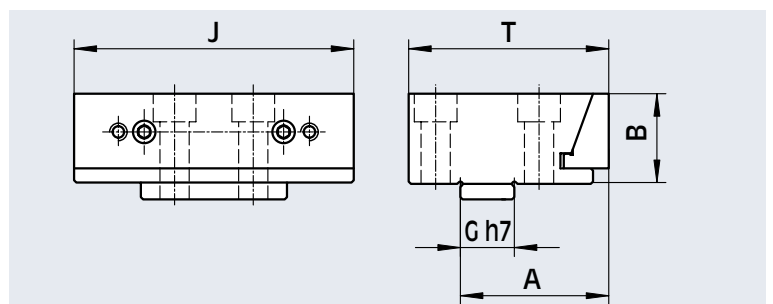
Cod.	for type	A mm	B mm	C mm	D mm	G mm	J mm	T mm
58 47 32 19	NCN-s 125	47	39.5	40	20	24	124.4	70
58 48 32 19	NCN-s 160	63	49.8	64	25	30	160.4	96

Fixed support with pull-down jaw for NCN-d



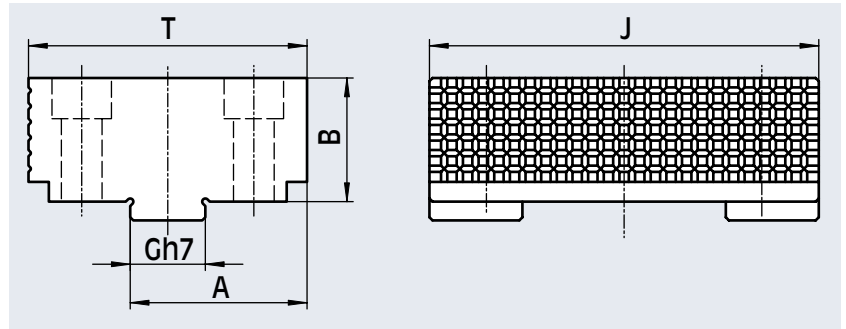
Cod.	for type	A mm	B mm	G mm	J mm	T mm
58 47 72 10	NCN-d 125	69.5	39.5	24	124.4	97
58 48 72 10	NCN-d 160	87	49.8	30	160.4	120

Moveable support with pull-down jaw for NCN-d



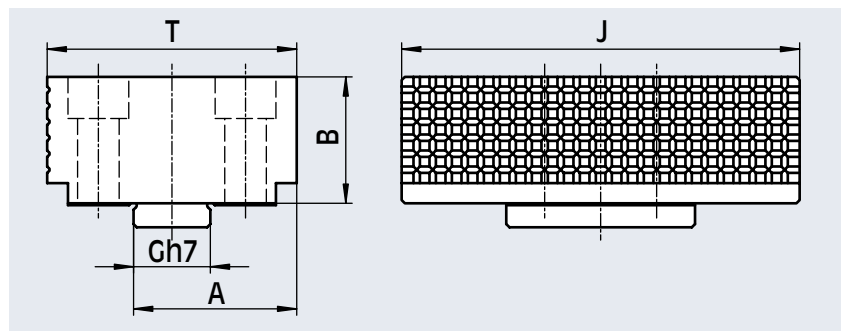
Cod.	for type	A mm	B mm	G mm	J mm	T mm
58 47 73 10	NCN-d 125	66	39.5	24	124.4	89
58 48 73 10	NCN-d 160	87	49.8	30	160.4	120

Fixed square block jaw for NCN-k



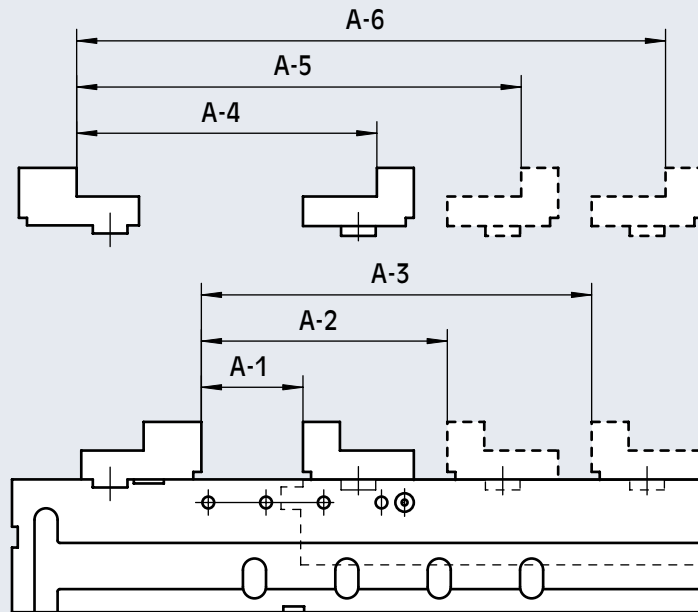
Cod.	for type	A mm	B mm	G mm	J mm	T mm
58 47 37 19	NCN-k 125	56	39.5	24	124.4	88
58 48 37 19	NCN-k 160	65	49.8	30	160.4	100

Moveable square block jaw for NCN-k

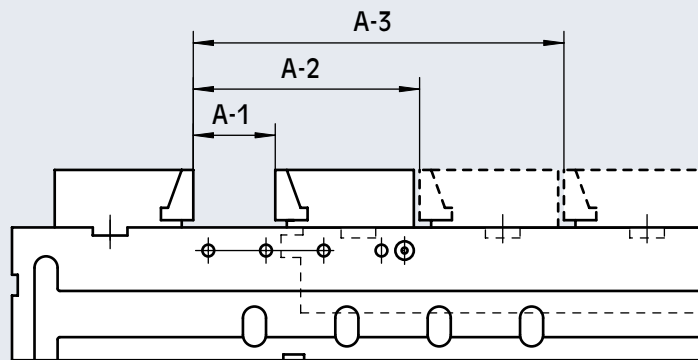


Cod.	for type	A mm	B mm	G mm	J mm	T mm
58 47 31 19	NCN-k 125	51	39.5	24	124.4	78
58 48 31 19	NCN-k 160	65	49.8	30	160.4	100

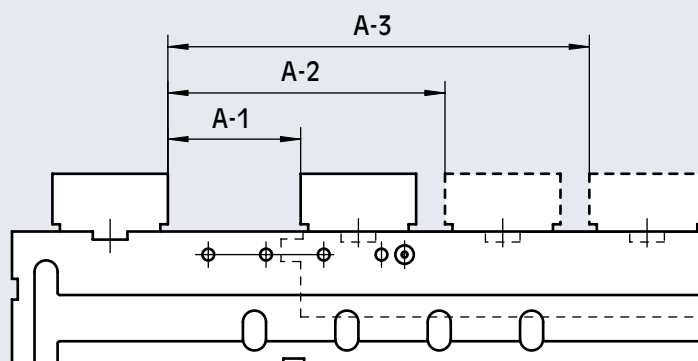
NCN-s 160



NCN-d 160



NCN-k 160



type	A1 mm	A2 mm	A3 mm	A4 mm	A5 mm	A6 mm
NCN-s 160	0 - 88	50 - 178	140 - 268	132 - 260	222 - 350	312 - 440
NCN-d 160	0 - 70	32 - 160	122 - 250	-	-	-
NCN-k 160	0 - 115	77 - 205	167 - 295	-	-	-